



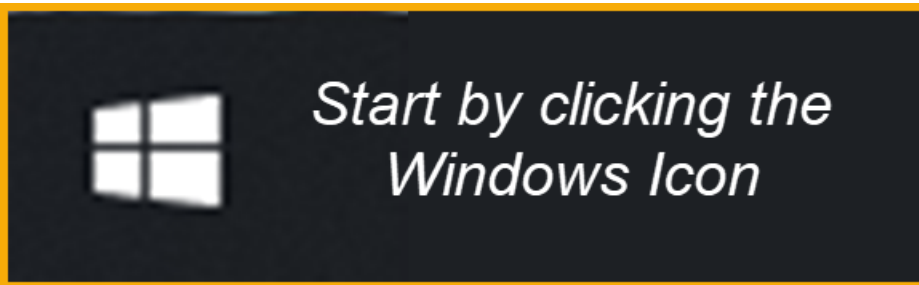
# Library Resource Management Systems, Inc.

## HOW TO?

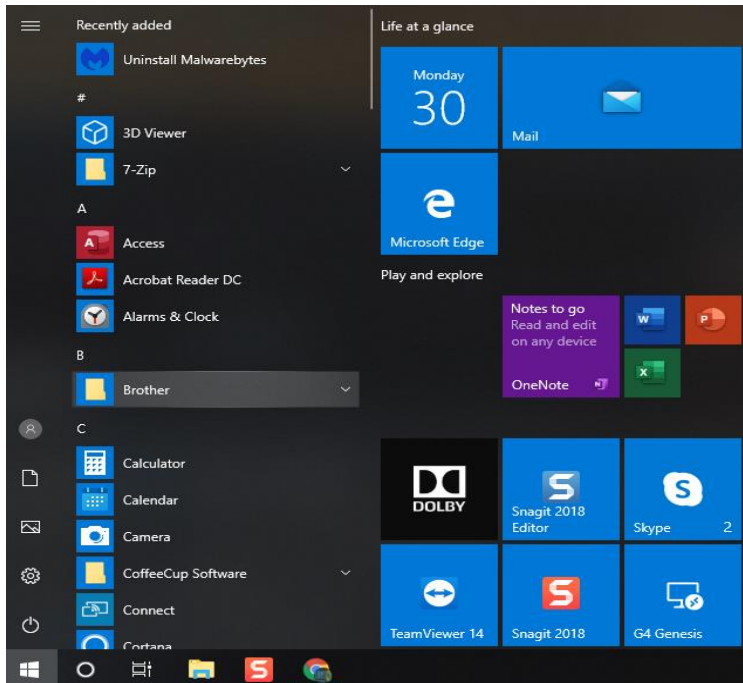


### **Create the Genesis G4 Desktop Connection for Windows**

Begin this set-up by clicking the Windows Desktop Icon



When this View appears:



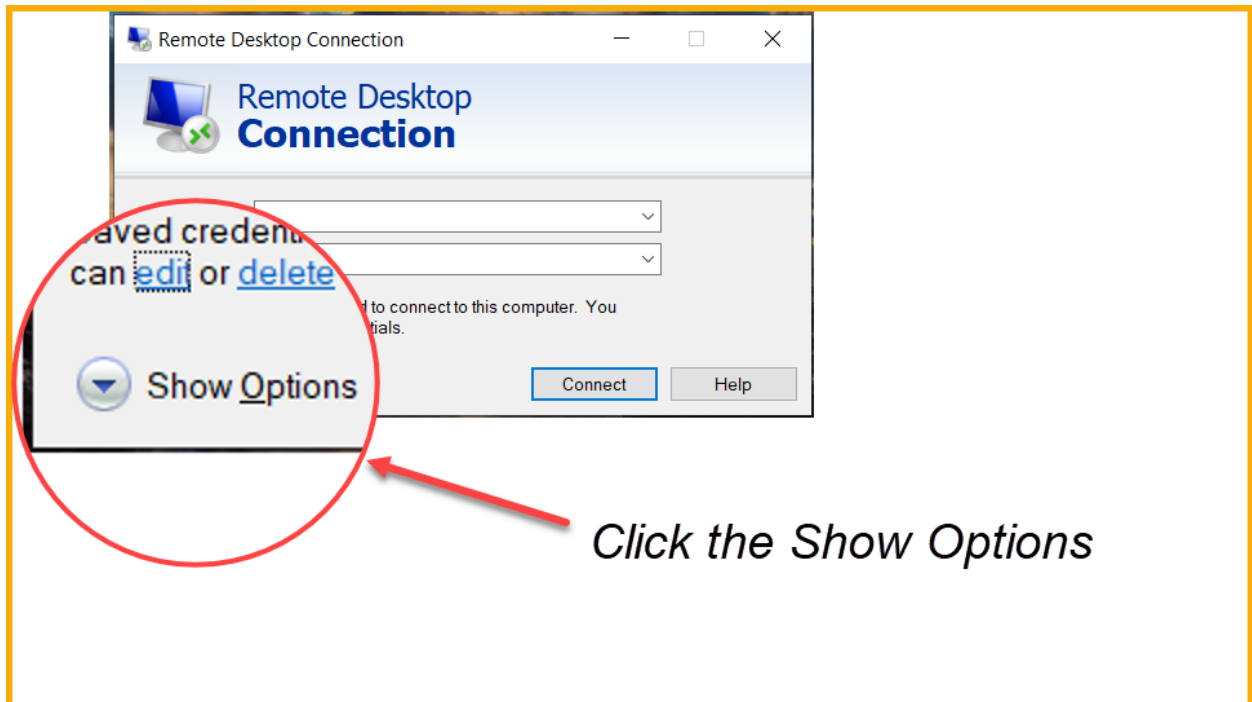
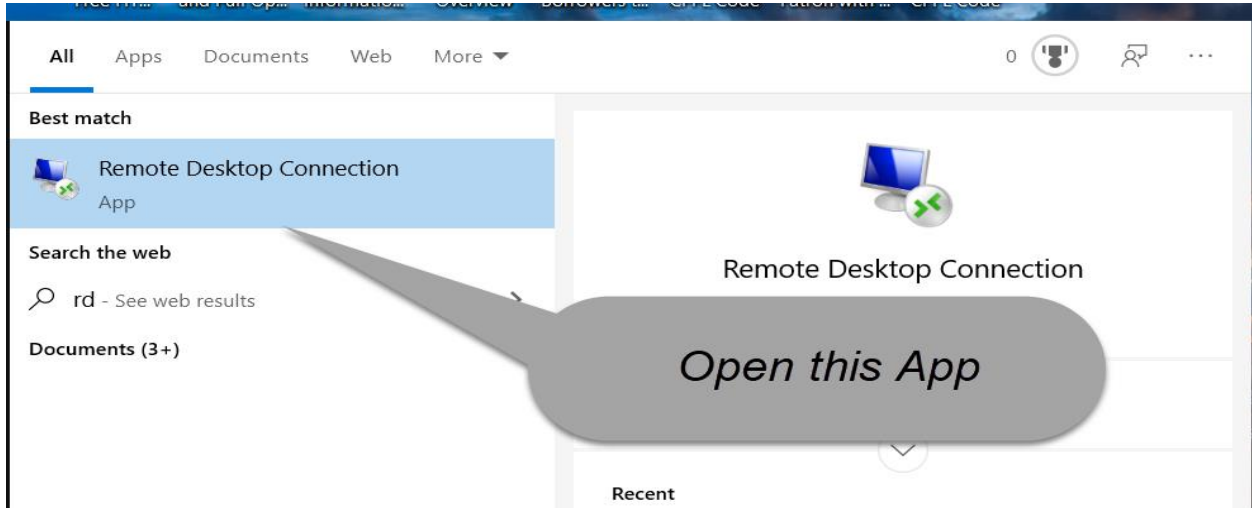
Immediately type the letters RDP.

This action will present the following Remote Desktop Connection App as displayed on Page two of this document.



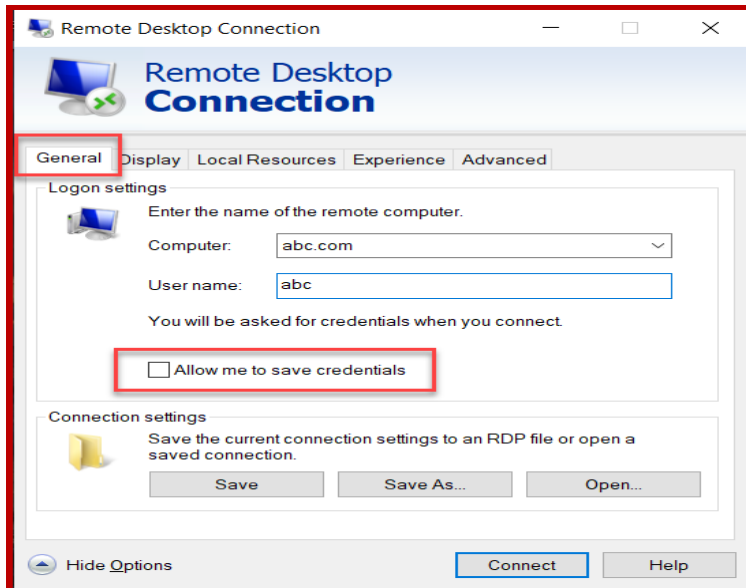
# Library Resource Management Systems, Inc.

Double Click the highlighted Remote Desktop Connection App





# Library Resource Management Systems, Inc.



**LRMS will or has provided Logon Settings information to allow the set-up of the Remote Desktop Connection.**

This information is proprietary and is not to be randomly shared.

Because of the nature of this connectivity a user can apply this same connection information to a home Windows PC or Laptop, (Mac, iPad or Android devices using a Microsoft interface).

What must be understood when duplicating to a second device using the same credentials; only one device can utilize the connection. (Example a workplace computer is connected using the credentials provided and the second computer with the same credentials attempts to connect, the first computer will lose its connection to the second computing device.)

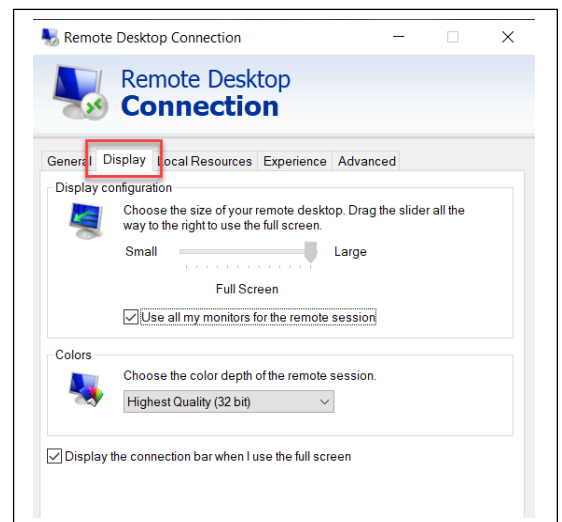
- **General Tab:**

- Using the information supplied to create this connection begin by adding the Computer name and the User name. The User name must be added as provided by LRMS, it is case letter sensitive, meaning upper and lowercase letters when provided within the password are to be added similarly.
- **Add a Check Mark** to "Allow me to save credentials".

When added move to the next set-up Tab:

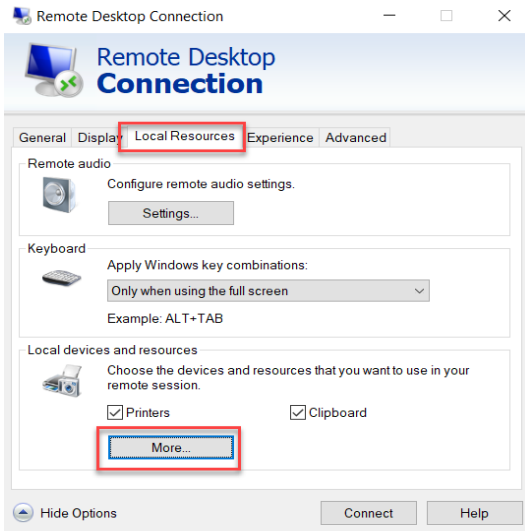
- **Display Tab**

- Normally this is set to Full Screen
  - There are circumstances where this setting may need adjusting lower the Pixels, some devices are high definition have a small screen display, when not altered G4 will display in smaller definition.
  - If two monitors exist, check Use all monitors for the remote session.

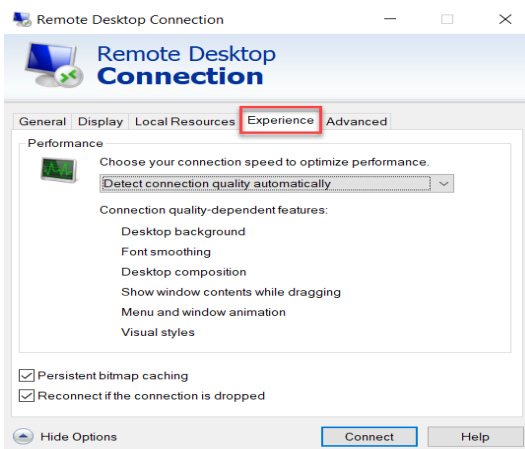




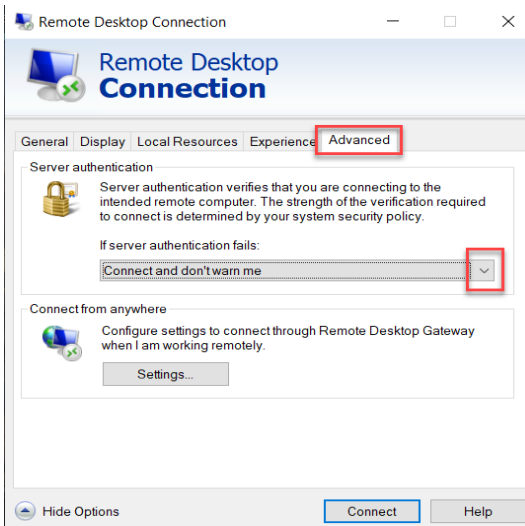
# Library Resource Management Systems, Inc.



- **Local Resources**
  - **Local Devices and Resources**
    - As shown Printers and Clipboards are to have a check mark.
    - More button, open this button and place a check mark within each listed item that is displayed.
    - Click OK to save
    - Move to the next Tab



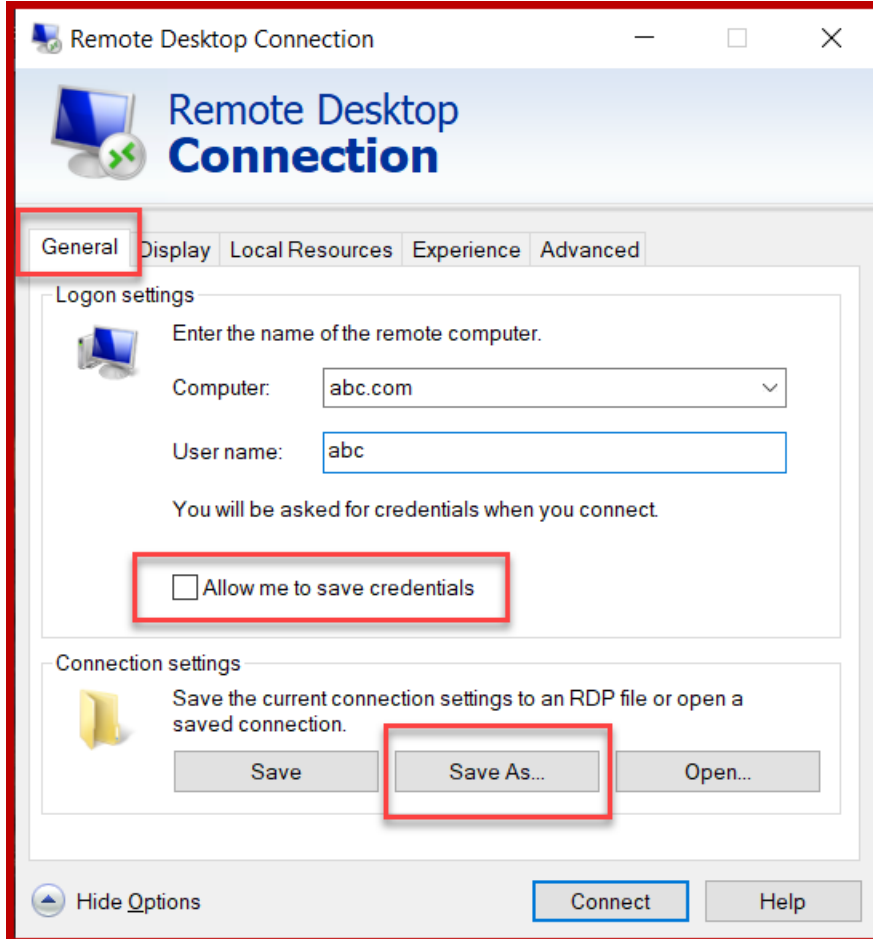
- **Experience Tab**
  - No changes needed within the Experience Tab
  - Move to the next Tab



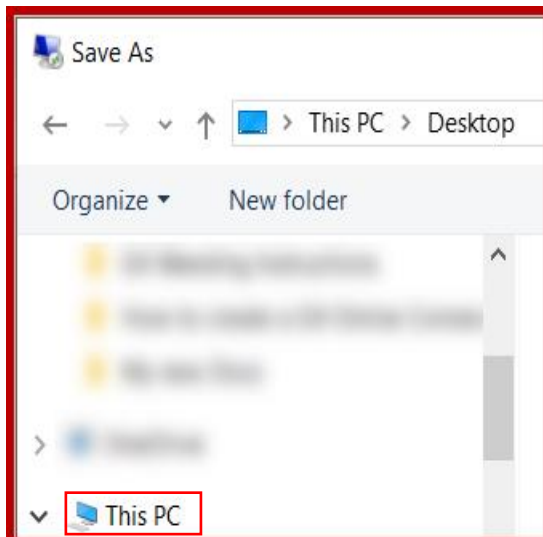
- **Advanced Tab**
  - **Server authentication**
    - Modify "If server authentication fails: by selecting Connect and don't warn me.
  - Move "**Back**" to the General Tab



# Library Resource Management Systems, Inc.



- **Remote Desktop Connection General Tab**
  - **Allow me to save credentials**
  - LRMS does recommend saving these credentials to avoid having to enter the User Name password when the program is launched.
  - However, the rules set by your security staff prevails, always check with them to be sure Saving a password is permissible.



- **Save As:**
  - **This PC > Desktop**
  - Save this information to the computer Desktop to create a Shortcut and Icon, you have the opportunity to provide a description. We suggest naming this to read as “G4 Library System”, save your entry to the Desktop.
    - By Default, it will want to save to the Documents folder, be sure to send this to your Desktop.
  - Next add [TSPrint Printing](#) and the [Code 39 Barcode Font](#) for label printing.